



ENTRY 12

Best Balustrade

Aesthetic Value:

The beauty of an elevated vertical grain curved parapet guard wall that spans 6 stories can be both magical and daunting.

Stair Safety:

The balustrade design was fluent and uniform throughout all 6 stories. The local building codes were exceeded.

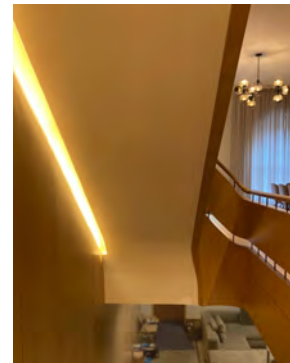
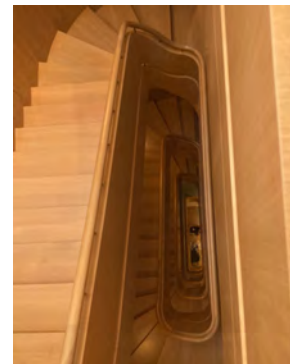
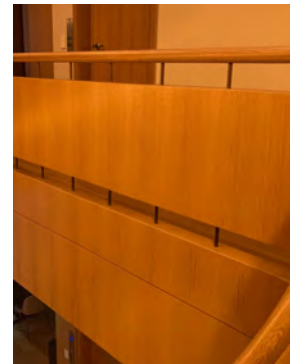
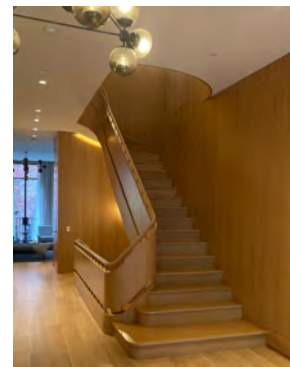
Quality of Workmanship:

The vertical grain rift sawn white oak was painstakingly sequentially matched throughout all 6 stories of the project - even between the elevated parapet guard & stingers & balcony fascia below.

Technical Challenge:

The layout and execution of the sequentially matched rift sawn white oak balustrade with over 20 different pitch changes on this 6 story project was one of the major challenges.

NOTE: Entry met the code as enforced in the local jurisdiction.





ENTRY 13

Best Balustrade

Aesthetic Value:

Custom Maple curved to straight staircase with custom glass panels with old Florida art etching into glass lit by LED

Stair Safety:

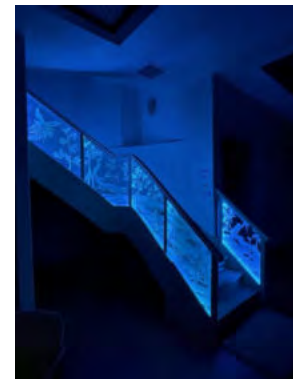
It meets all requirements to be a safe handrail

Quality of Workmanship:

Etched Art Work

Technical Challenge:

Etching radius glass applying 360 LED lighting around every glass panel to have uniform lighting.





ENTRY 14

Best Balustrade

Aesthetic Value:

Three stories of Oval Mahogany Handrail with tapered balusters and without any newel posts, creates an elegant design for this home.

Stair Safety:

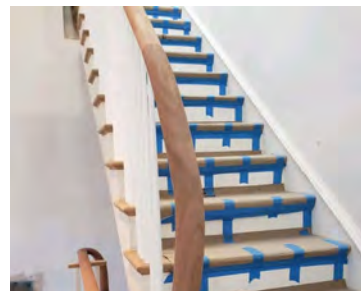
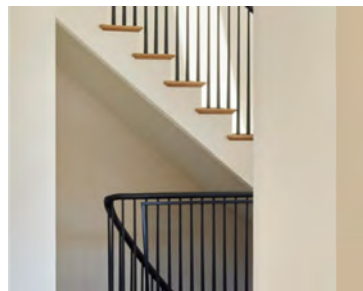
Entry has met the codes as enforced in local jurisdiction.

Quality of Workmanship:

The oval handrail crafted out of Sapele Mahogany, wraps along this stair with painted tapered balusters.

Technical Challenge:

This is three stories of continuous twisting handrail installed without newel posts.



NOTE: Entry met the code as enforced in the local jurisdiction.



ENTRY 15

Best Balustrade

Aesthetic Value:

These switchback stairs have very tight curves at turns to provide the stairs and balustrades with inviting curves that flow from the basement to the 2nd floor. Custom forged iron balustrade.

Stair Safety:

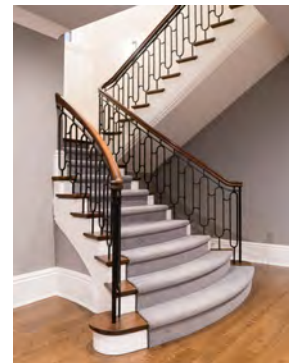
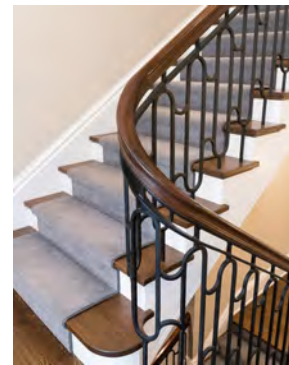
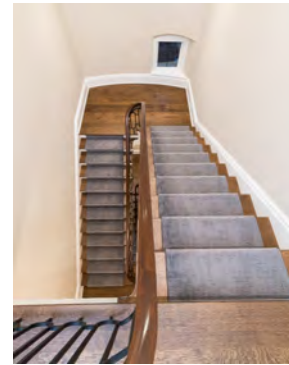
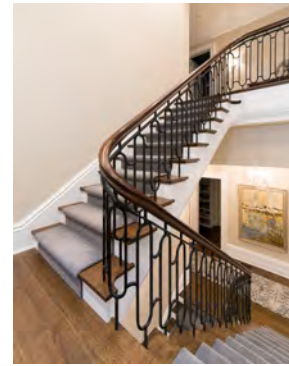
Close attention was spent was paid to runs throughout the flares. Handrail is continuous from basement to 2nd floor.

Quality of Workmanship:

Balustrade was hand forged in-house from 5/8" round bar stock. Wreathed walnut fittings were hand carved in-house to perfectly marry up with forged balustrade.

Technical Challenge:

Sphere code compliance and getting balustrade design, wreathed rail, and wreathed stringer trim to flow nicely through the tight radii without kinks and spacing issues were some of the challenges.



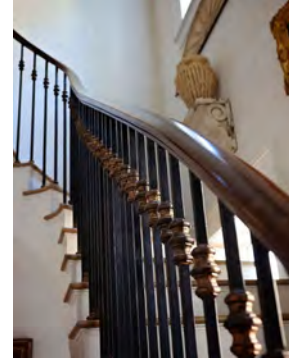
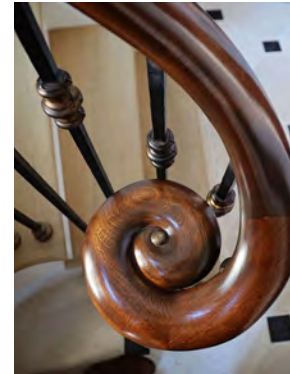
NOTE: Entry met the code as enforced in the local jurisdiction.





ENTRY 16

Best Balustrade



Aesthetic Value:

The balustrade was designed in conjunction with Du Bois Metal works. The continuous rail cap was inspired by the historic Joseph Manigault residence.

Stair Safety:

The continuous rail allows for safe ascending and descending of the stair without having to implement awkward fittings or transitions to navigate.

Quality of Workmanship:

The rail cap was laid to the iron entirely by hand, and all the pieces were hand carved, scraped and joined. The "Mortgage Button" was carved from maple to match the inspiration rail.

Technical Challenge:

The stair was poorly built with 11 pitch changes. We mapped the stair in 2d and drafted superior lines, provided metal templates and new fall line blocking and kept it in code, no automation was used.

NOTE: Entry met the code as enforced in the local jurisdiction.