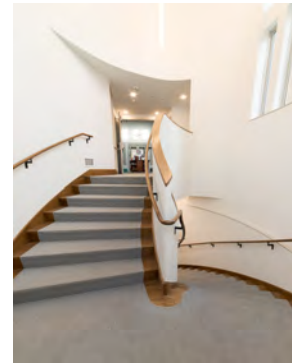
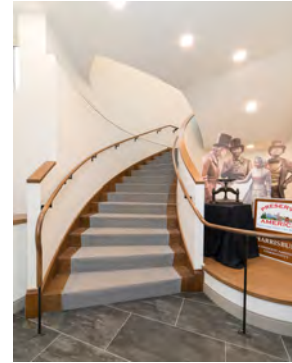




# ENTRY 23

## Best Commercial Stairway



**Aesthetic Value:**

The curved stairway with parapet walls offers inviting access to both floors of this renovated library.

**Stair Safety:**

Curved stair carriages surpass rise/run requirements and handrails provide continuous graspability throughout the stairs and landing areas.

**Quality of Workmanship:**

Solid hardwood construction of the carriages. Parapet walls were also shop built prior to delivery and reassembled on site.

**Technical Challenge:**

It was challenging to create a pleasing layout in this geometrically unorthodox space.

NOTE: Entry met the code as enforced in the local jurisdiction.





# ENTRY 24

## Best Commercial Stairway

**Aesthetic Value:**

Four stories of classical drama in customers entryway. The stair designers vision complimented all the other interior custom work.

**Stair Safety:**

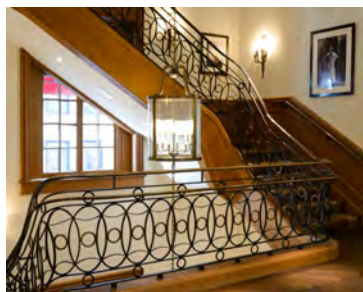
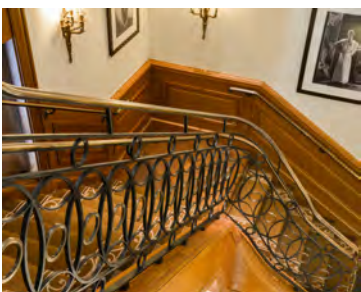
Met all the local commercial egress code requirements.

**Quality of Workmanship:**

The massive open side profiled and carved stringers with forged iron guard with bronze railings was designed & fabricated all contiguously throughout the 4 story well opening.

**Technical Challenge:**

Designer required parallel stringer holds on the width aspect versus the common vertical depth holds. This made the dogleg pitch change locations far more complex to achieve.

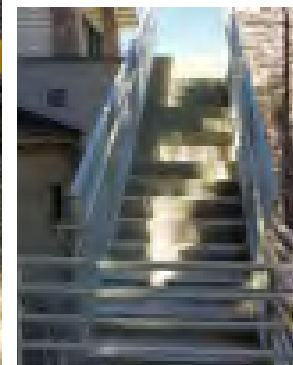
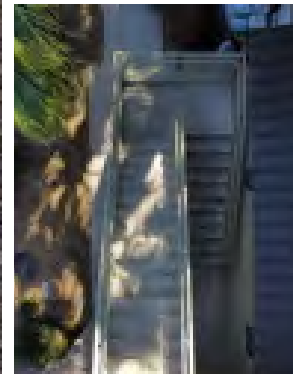






# ENTRY 25

## Best Commercial Stairway



**Aesthetic Value:**

This stair brings much added value to the fitness center. It showcases metal and concrete coming together to create an eye pleasing stair that will last a lifetime.

**Stair Safety:**

This stair meets all the safety requirements. The handrail is sturdy and has little to no shaking when walking up and down it.

**Quality of Workmanship:**

The stair is built for a high end fitness center and required a ton of attention to detail because everyone in the community would be seeing this stair.

**Technical Challenge:**

The technical part of this stair was the remodel portion of it. It was a preexisting stair that needed to be tied into the existing railing and provide a smooth transition that wasn't noticeable.

NOTE: Entry met the code as enforced in the local jurisdiction.