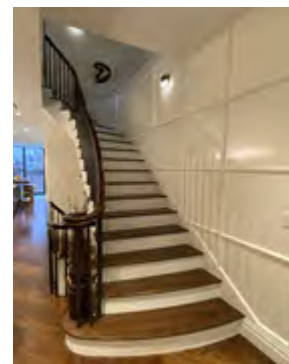
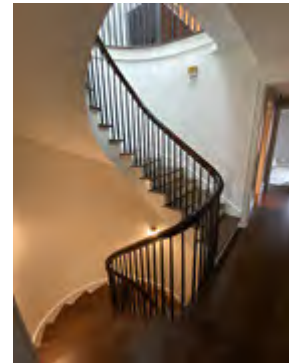




ENTRY 40

Best Curved Stairway - Traditional



Aesthetic Value:

This stair (5 continuous flights) was completed in a very historic brownstone with limited space for the stairs. The curves of the stairs present a strong visual architectural statement.

Stair Safety:

The stairs were all different in layout but have the same walkline depth throughout. The over the post handrail let's you keep your hand on the rail uninterrupted from the 1st floor to the 5th floor.

Quality of Workmanship:

The stair and balustrade were shop fabricated and shop applied finishes. All components were fabricated in house to maintain the highest quality.

Technical Challenge:

The challenge was that we designed the stair system in conjunction with the Architect to fit the limitations of the floor plans. The installation of curved stairs 5 flights up presented a challenge.

NOTE: Entry met the code as enforced in the local jurisdiction.



ENTRY 41

Best Curved Stairway - Traditional



Aesthetic Value:

The bridal elliptical stairways and balcony balustrade provide a grand welcome to the huge residential foyer. The complex geometry is overshadowed with many small details that steal your attention.

Stair Safety:

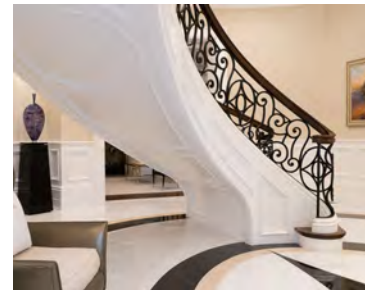
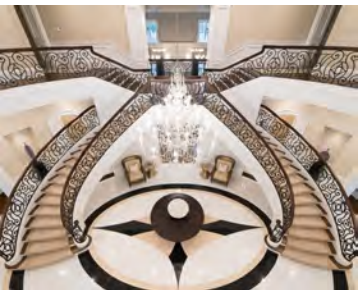
Treads were laid out with attention to consistent tread run at various parts of the treads despite the elliptical geometry of the stairs.

Quality of Workmanship:

All hardwood construction in these freestanding stairs. The balustrade was forged from 3/4" iron bar stock, and the compound hand rail and stringer terminations were made to exactly match the iron.

Technical Challenge:

Some challenges included stringent timelines, designing with nothing more than a photo, going through 20+ versions to get to approval by all parties, complex wreath work provided from CAD files only.



NOTE: Entry met the code as enforced in the local jurisdiction.



ENTRY 42

Best Curved Stairway - Traditional

Aesthetic Value:

Our design, inspired by the client, pays homage to the stairs at a beloved museum and a historic church in Charleston, SC. We established a recurring rose theme that we also employed in the mantle.

Stair Safety:

We incorporated dancing winders to keep the walking line uniform but graduated the rail side so that the rail line rose gradually with the turn instead of having steep pitch changes.

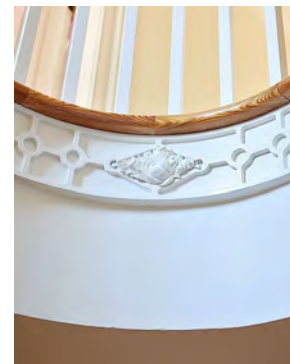
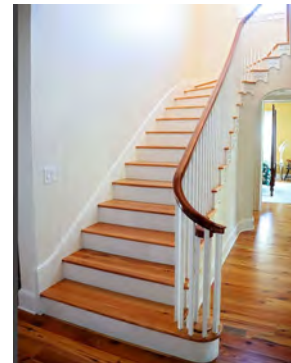
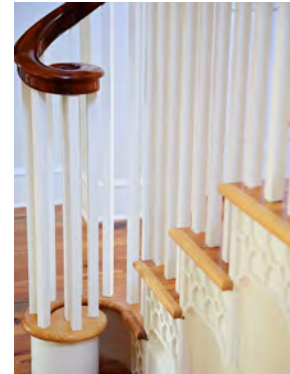
Quality of Workmanship:

All the rail parts, carvings, curved brackets, curtail step and apron detail were all meticulously hand carved from our own designs and drawings from solid poplar, pine, basswood, and 16/4 sapele

Technical Challenge:

The stair was drawn in 2d and built without any 3D renderings or 5 axis work. The balustrade was designed and drafted using the centuries old tangent method, then sawn, carved and scraped by hand

NOTE: Entry met the code as enforced in the local jurisdiction.





ENTRY 43

Best Curved Stairway - Traditional

Aesthetic Value:

The dramatic look of a thin box stepped curved stairway is rare, especially when it's engineered in wood that required multiple tangent points and pitch changes.

Stair Safety:

The run and rise was more similar to commercial codes. All the local codes were satisfied.

Quality of Workmanship:

Everything was mortised, tongue & groove, lock mitered, and blind fastened together. The railing and boxes have 7 different pitch changes to overcome.

Technical Challenge:

To engineer a thin reveal stepped curved stair carriage that floats alongside the window opening. To design in multiple sections in shop that required hidden fastening in the field.



NOTE: Entry met the code as enforced in the local jurisdiction.



ENTRY 44

Best Curved Stairway - Traditional

Aesthetic Value:

This sweet looking curve tucks right in to it's space perfectly.

Stair Safety:

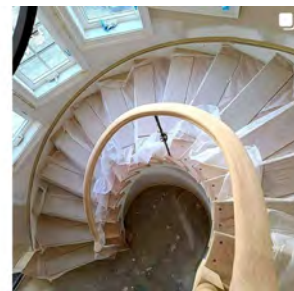
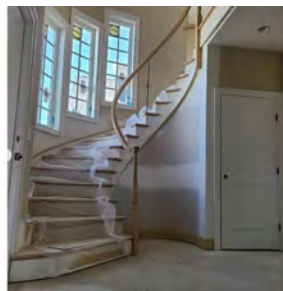
Entry has met the codes as enforced in local jurisdiction.

Quality of Workmanship:

Custom White Oak Treads and painted Risers comprise this classic beauty.

Technical Challenge:

This stair was designed and site-built to fit into a round turret in a 270° curve.

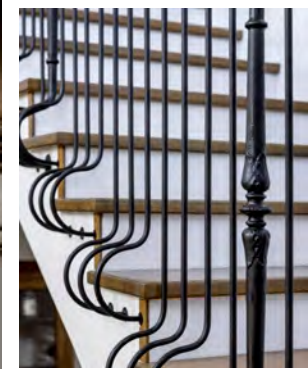
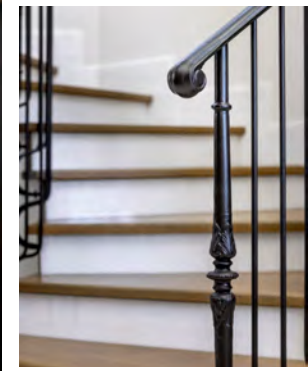


NOTE: Entry met the code as enforced in the local jurisdiction.



ENTRY 45

Best Curved Stairway - Traditional



Aesthetic Value:

The Haifa Residence curved stair invites the idea of continuous curves not only in the layout of the stair, but in the curved balusters. This look mixes the look of traditional with an updated look.

Stair Safety:

The stair follows all safety codes enforced by the City. There is no opportunity for a 4" sphere to fit through anyway and is made out of durable material.

Quality of Workmanship:

Most of this stair was handforged on sight by our craftsman in order to match the curve of the stair. With every piece of metal handcrafted, the quality of this stair is top of the line.

Technical Challenge:

Bending the metal at this long of curve was technical because of the length and profile of the handrail. With a tight radius in the inner stringer, the job could only be done but our top forger.

NOTE: Entry met the code as enforced in the local jurisdiction.